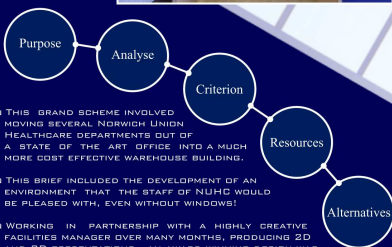
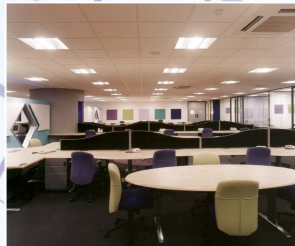
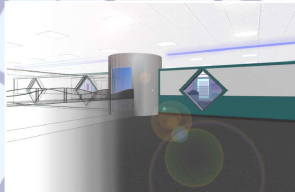
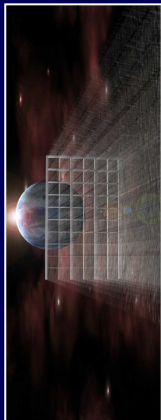


STORAX Interiors



PROJECTS DIVISION



THIS GRAND SCHEME INVOLVED MOVING SEVERAL NORWICH UNION HEALTHCARE DEPARTMENTS OUT OF A STATE OF THE ART OFFICE INTO A MUCH MORE COST EFFECTIVE WAREHOUSE BUILDING.

THIS BRIEF INCLUDED THE DEVELOPMENT OF AN ENVIRONMENT THAT THE STAFF OF NUHC WOULD BE PLEASED WITH, EVEN WITHOUT WINDOWS!

WORKING IN PARTNERSHIP WITH A HIGHLY CREATIVE FACILITIES MANAGER OVER MANY MONTHS, PRODUCING 2D AND 3D PRESENTATIONS, AN AWARD WINNING DESIGN WAS ACHIEVED.

THE DESIGN INTRODUCED UNUSUAL SHAPES, CURVES AND STATE OF THE ART LIGHTING. THE STAFF HAVE REPORTED TO BE EXTREMELY SATISFIED IN THIS NEW ENVIRONMENT.

STORAX WERE COMMISSIONED AS DESIGN AND BUILD MAIN CONTRACTORS AND ARE PLEASED TO REPORT THE COMPLEX INSTALLATION WAS COMPLETED ON TIME AND WITHIN THE AGREED BUDGETS.



NORWICH UNION HEALTHCARE
WORKING IN PARTNERSHIP WITH

"Project Managers in Commercial Interiors"

STORAX PROJECTS DIVISION